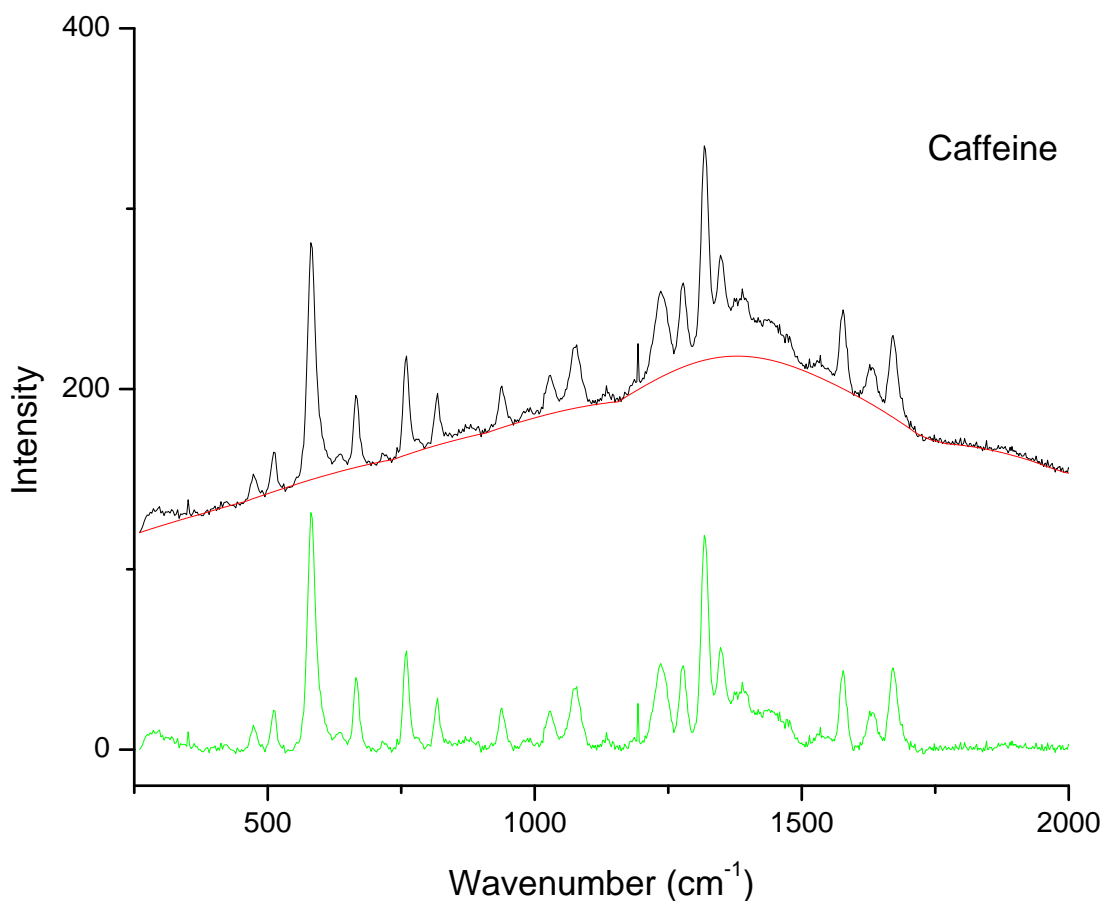




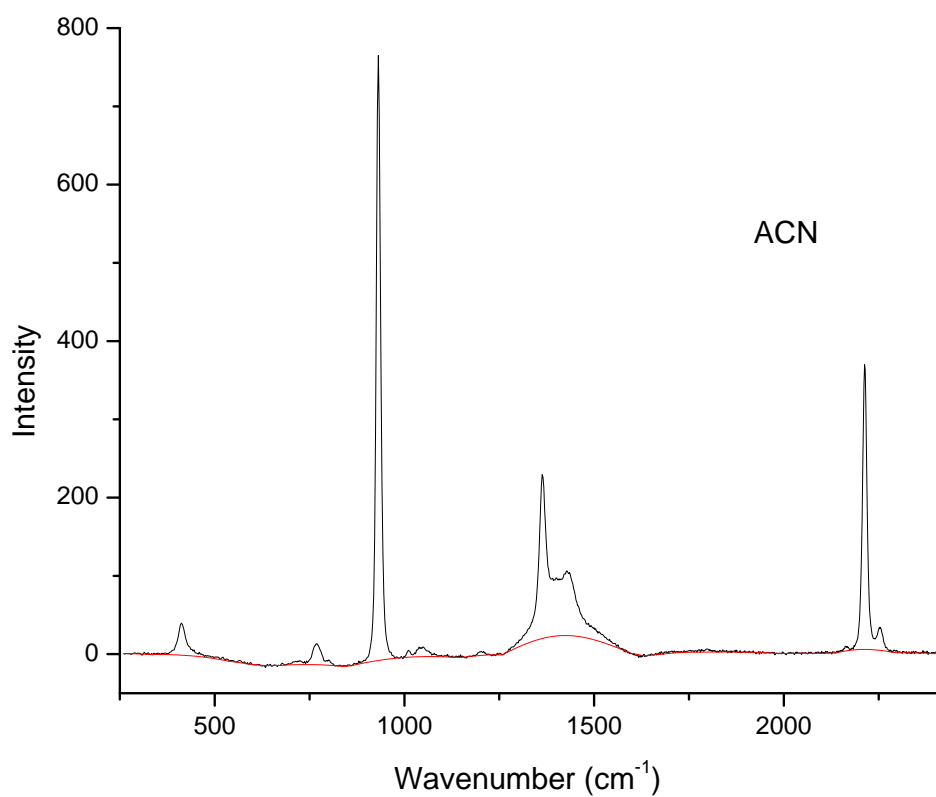
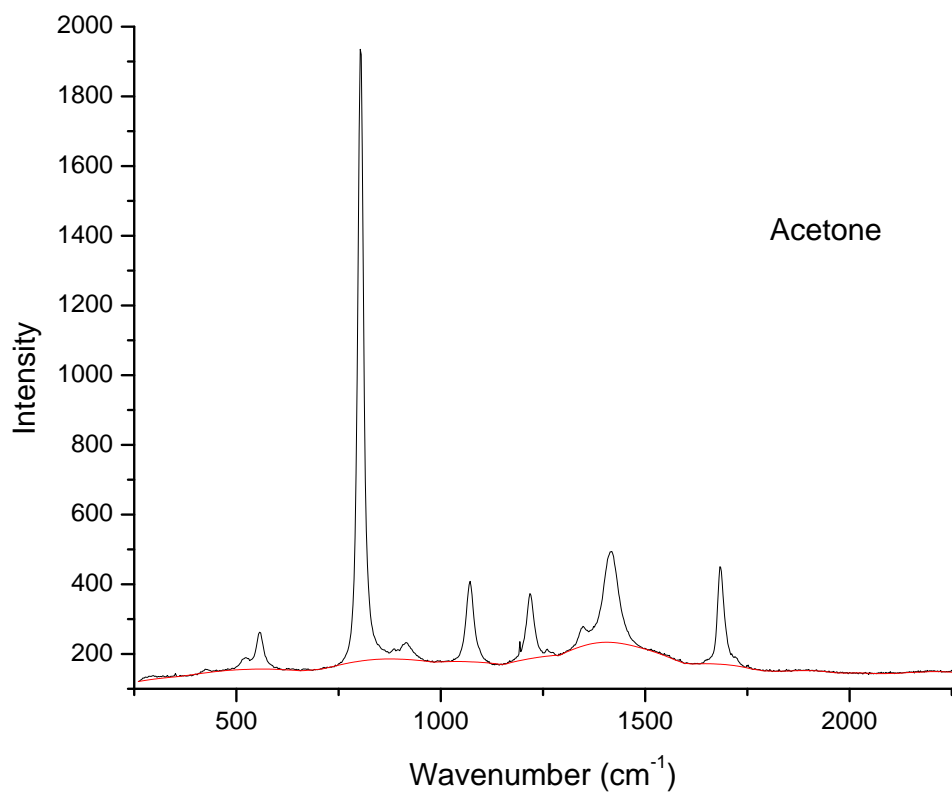
Background Removal Sample Raman Spectra

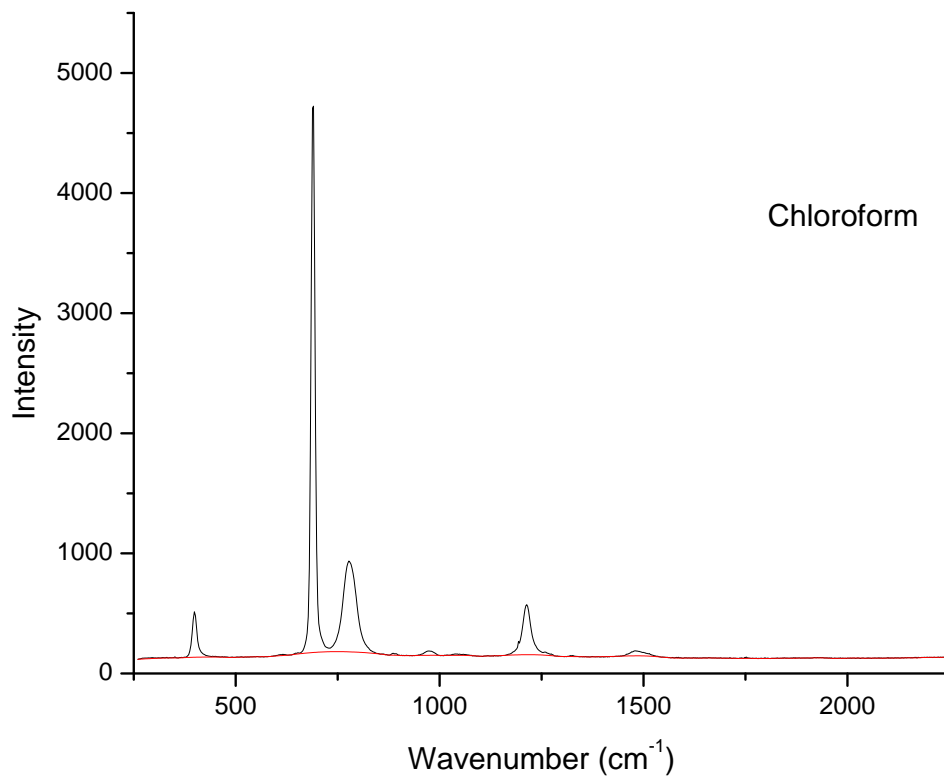
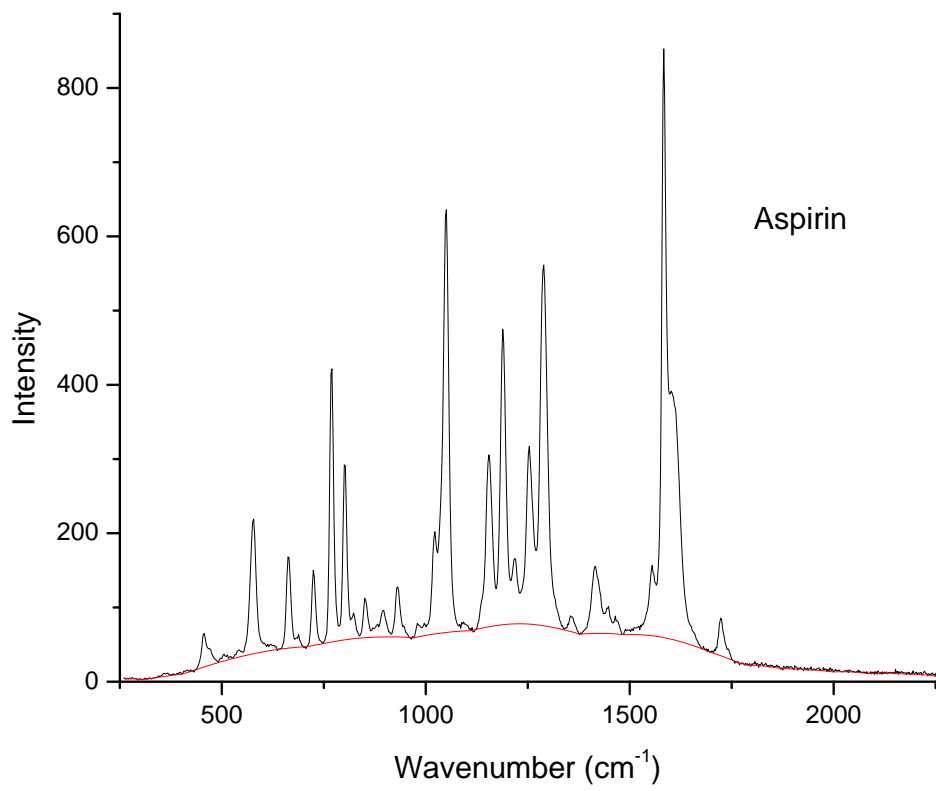
The W2I Background Removal (W2I BR) procedure has been optimized for Raman spectroscopy data. At the default setting (i.e., automatic background removal), this procedure reproducibly and reliably removes background for a large majority of samples, such as organic solvents, pharmaceuticals, food ingredients, and polymers. With a user-adjustable parameter, more difficult background or background from spectra with more complex peak structure can be effectively removed.

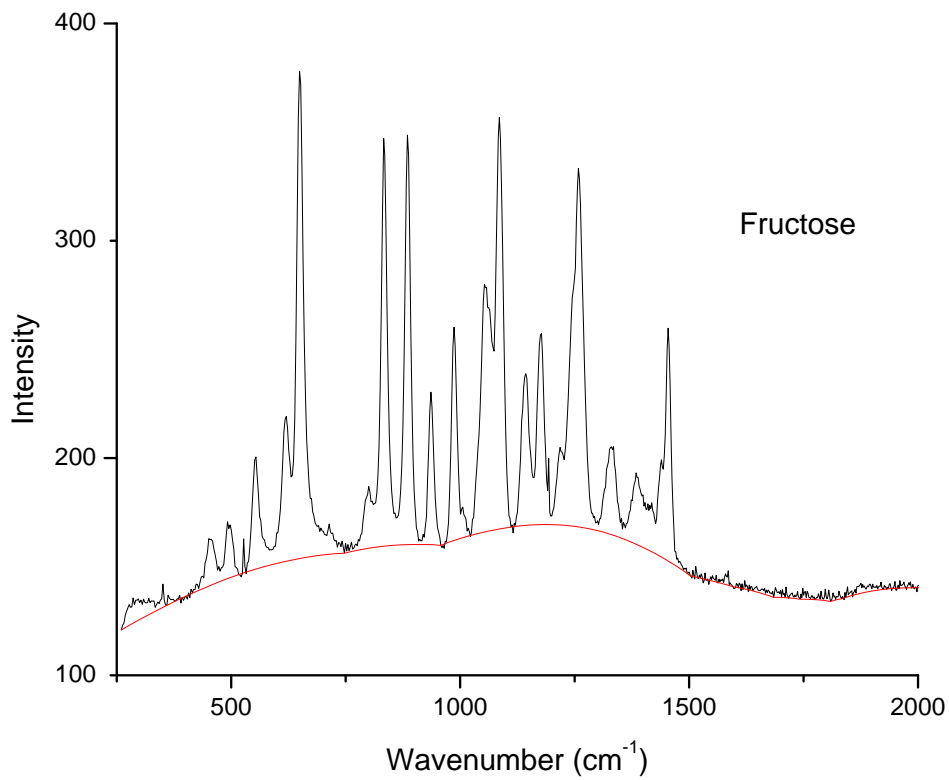
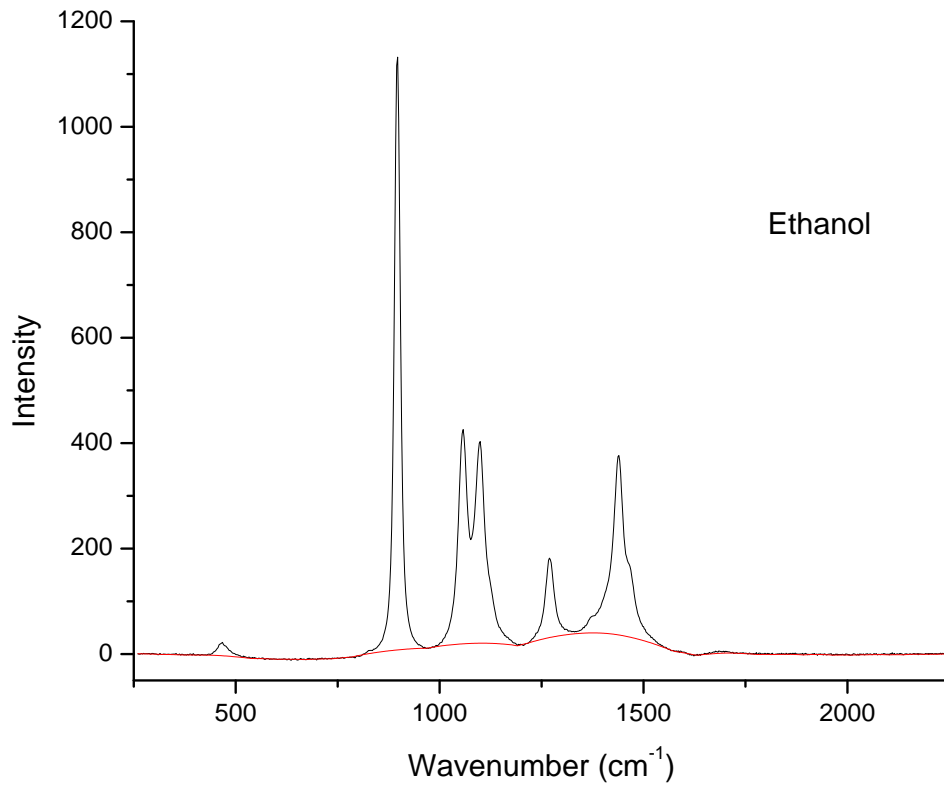
With Automatic Background Removal:

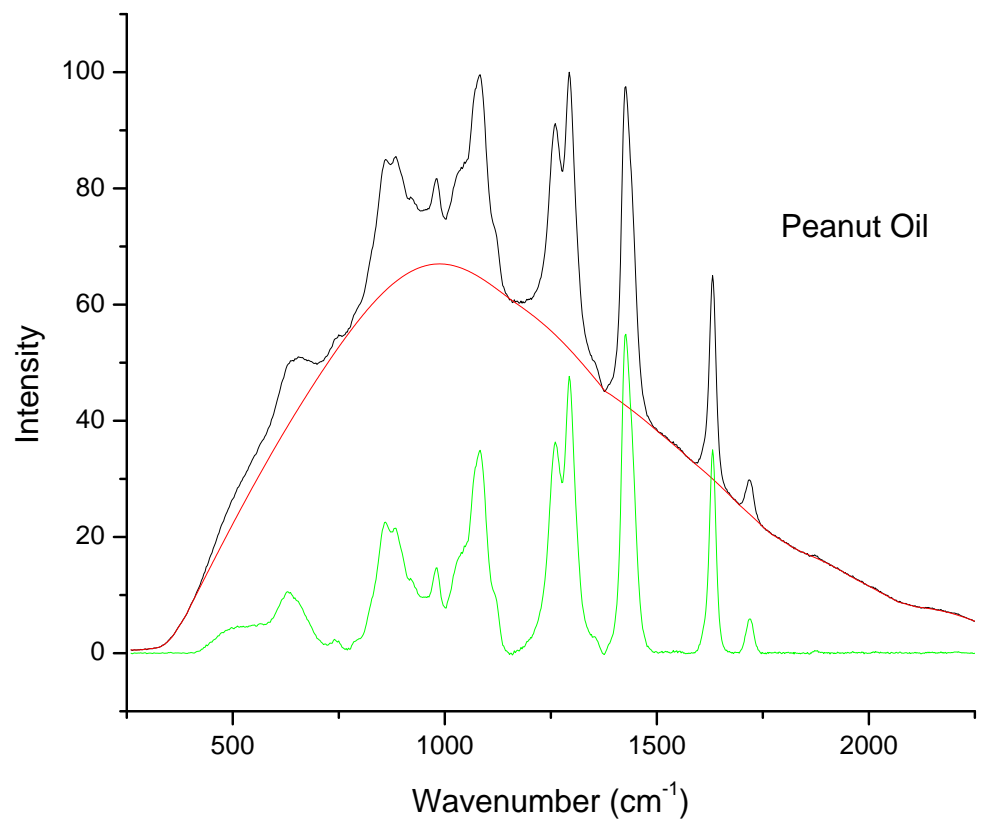
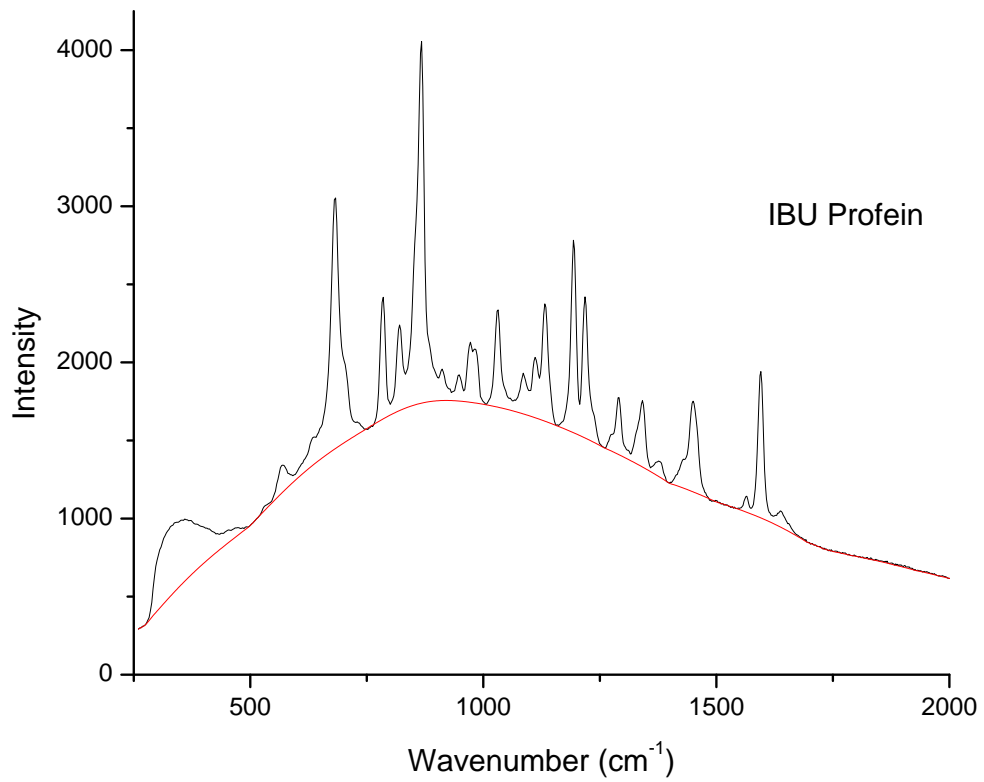


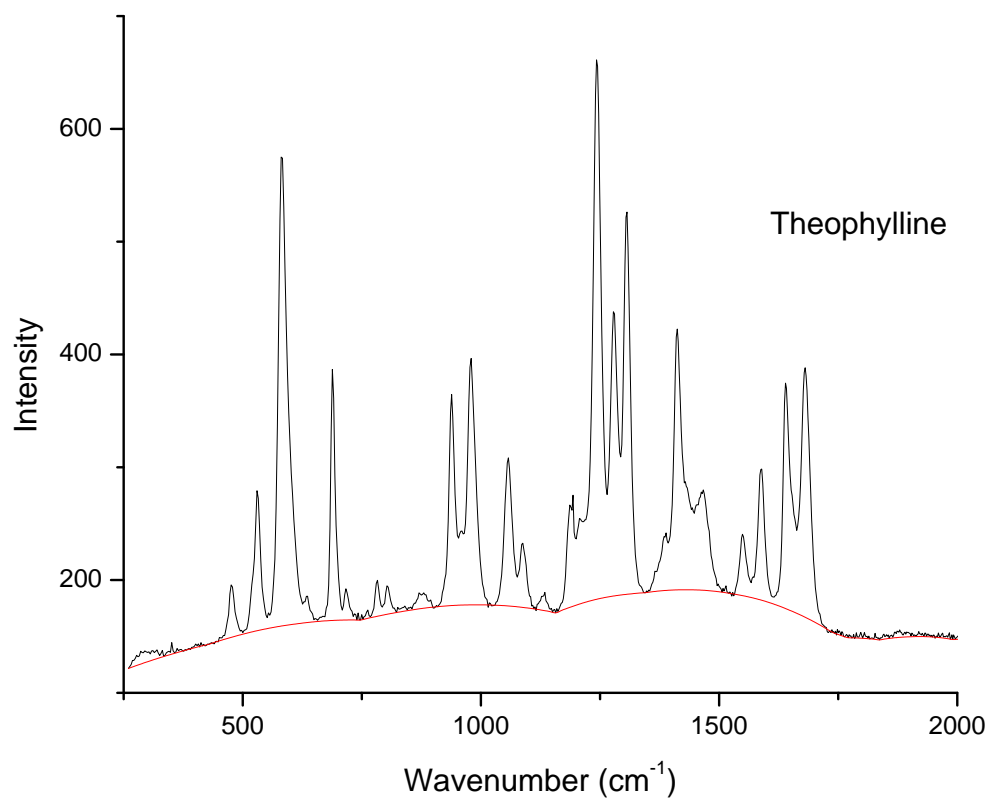
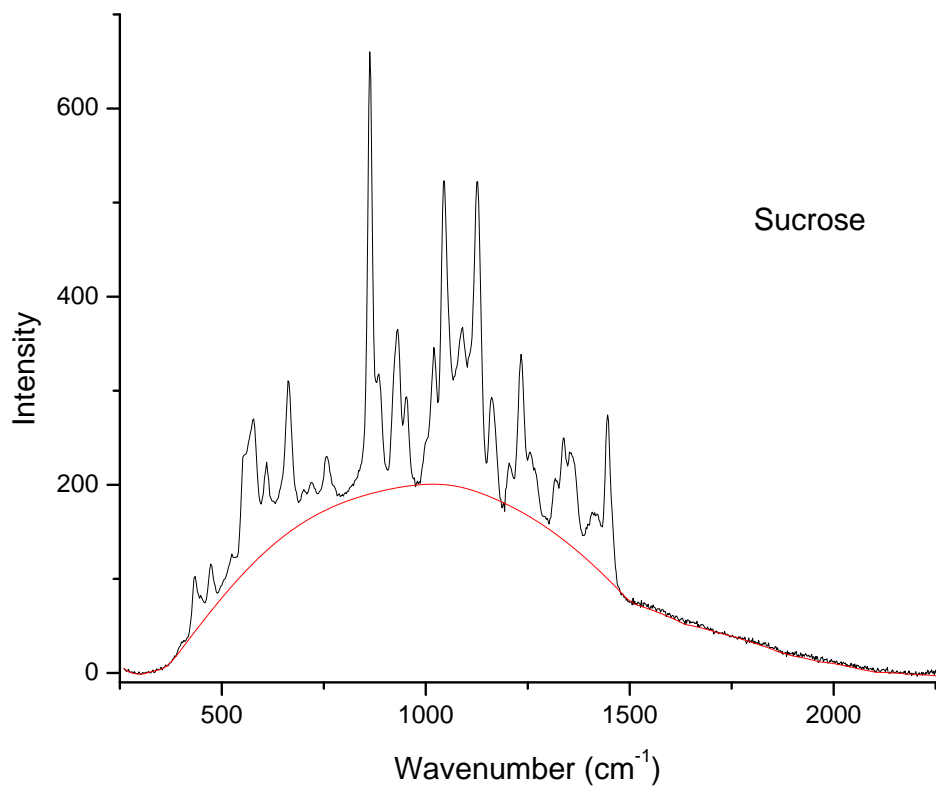
The above spectrum for caffeine powder in glass vial represents a Raman spectrum with a typical background: there is a linear rising part, a “hilly” middle part, and a trailing part. The background and the spectrum after background removal are plotted in red and green, respectively. The sample spectra presented below represents a wide variety of background situations. It clearly demonstrates the power of the W2I Background Removal in obtaining background-free spectra.

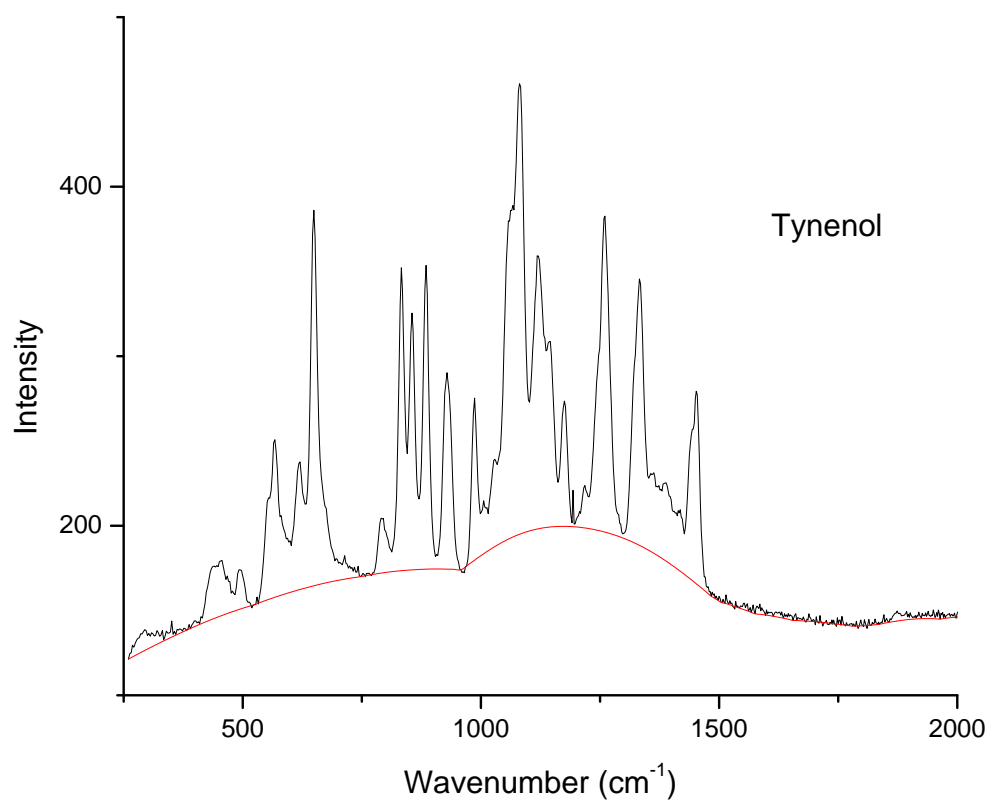
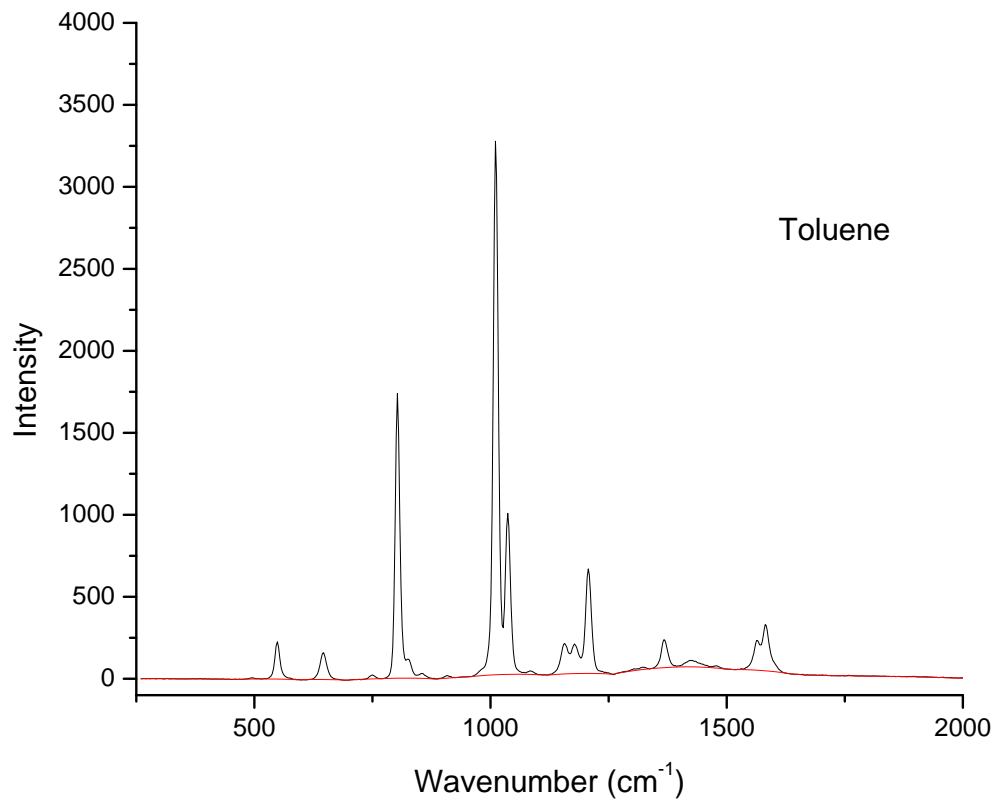


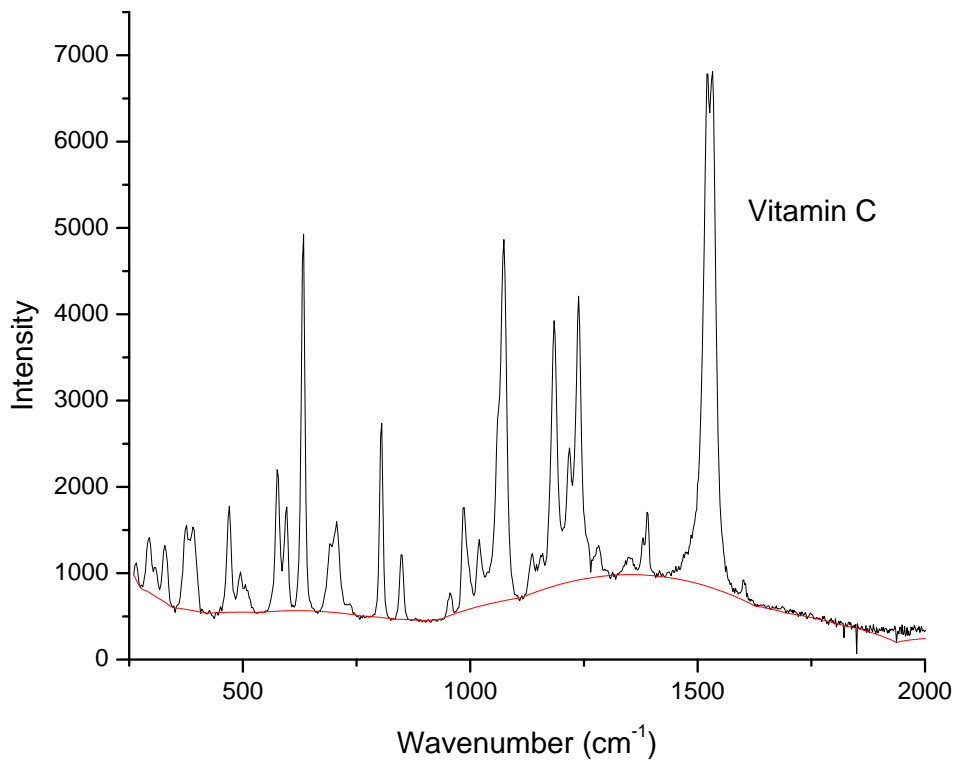




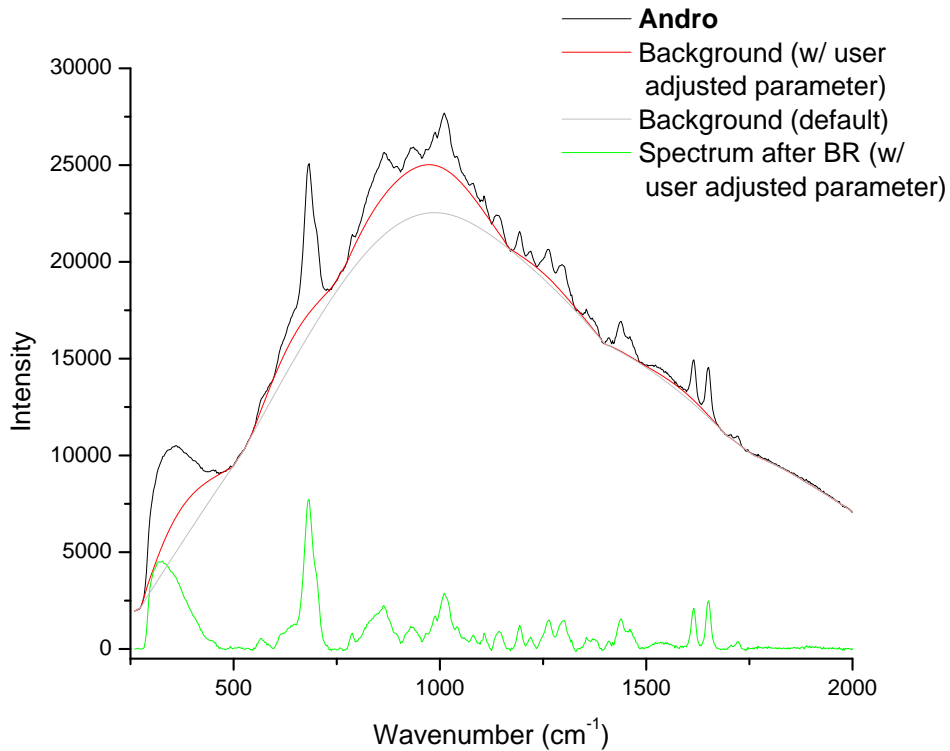


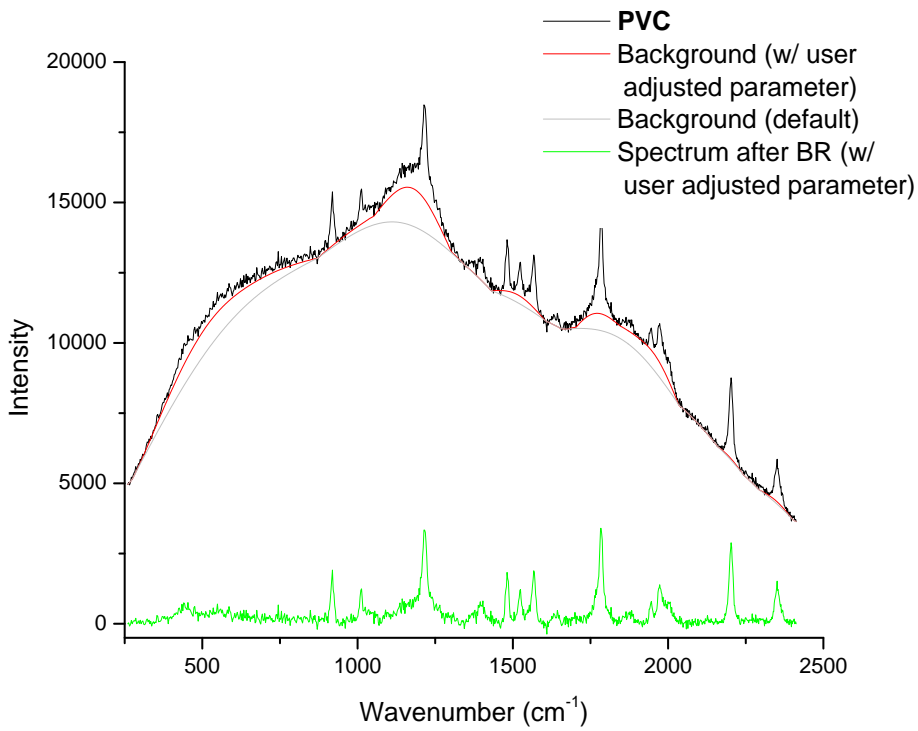
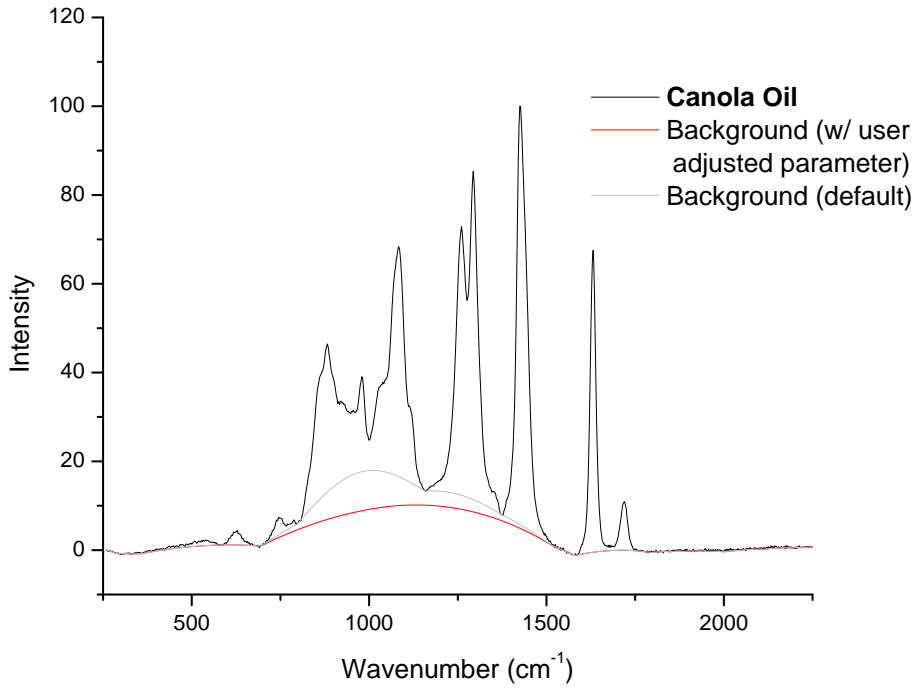






With User-Adjustable Parameter:





For more information, please contact us at:

W2 Innovations, Inc.
 364 Brighton Street
 Belmont, MA 02478 USA

Tel: (+1) 617.216.3606
www.w2innovations.com
info@w2innovations.com

Copyright © W2 Innovations, Inc.