

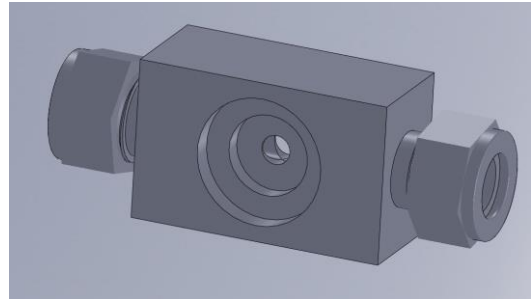


Flow-Through Cell

The Flow-Through Cell is designed for online measurements of gas and liquid streams in laboratories as well as in demanding industrial environments. It is constructed with 316 stainless steel and can work under high pressure and high temperature. The sapphire windows across the stream permit measurements such as absorption (from UV to NIR), fluorescence, and Raman. In addition, the built-in mirror on the opposite side of the probe increases the system's sensitivity to make fast analysis possible.

Features and Specifications:

- 316 stainless steel
- Sapphire windows
- 400 F / 204 °C
- 2000 psi
- ¼" compression fittings
- UV-NIR, fluorescence, Raman

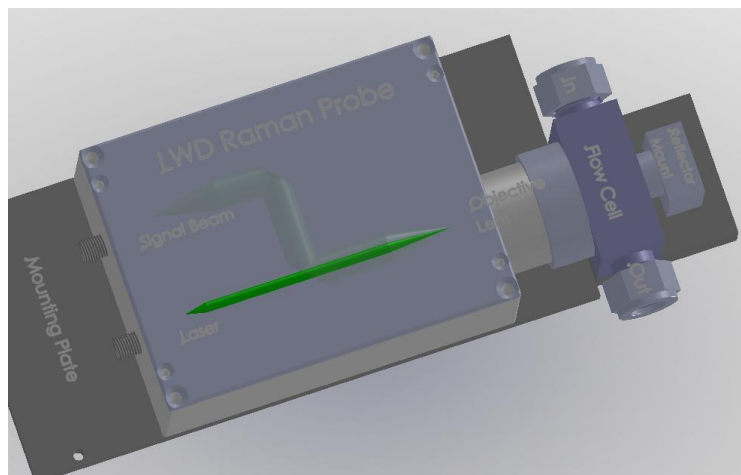


Dimensions:

69 mm (L) × 18 mm (W) × 25 mm (H)

Applications:

When combined with Raman sampling probes or a Long Working Distance Luminescence / Fluorescence Probe (LWD Lumi/Fluo Probe), and a Raman spectrometer, the Flow-Through Cell allows for on-line Raman, luminescence, or fluorescence analysis of processes in real time.



W2 Innovations, Inc.

364 Brighton Street, Belmont, MA 02478 USA Tel: (+1) 617.216.3606 info@w2innovations.com
www.w2innovations.com